

# NATIVE PLANT PROGRAMS



**Conserving and promoting New England's native plants to ensure healthy, biologically diverse landscapes**

---

[NativePlantTrust.org/education](https://NativePlantTrust.org/education)

FALL 2023 & WINTER 2024

*Something told the wild geese – It was time to fly,  
Summer sun was on their wings, Winter in their cry.*

EXCERPT FROM *SOMETHING TOLD THE WILD GEESE* BY RACHEL FIELD

Welcome to the fall/winter 2023–2024 season of Native Plant Trust’s educational offerings. We are excited to engage with a new season and all the rhythmic shifts that come with it, and we are most especially looking forward to seeing you at one of our upcoming programs.

This season we are continuing to grow our content directions, with more experiences available for youth & families as well as art & nature offerings. Join us for a conversation on how artists use plants to create anthotypes, sign up to have a seed from your garden engraved with imagery invoking a special story, join us at a free Conservation Library Talk in your neighborhood, and come engage with important new ideas at our fall symposium on native plants and climate change. We are very excited to announce the return of our Herbaria Series and we are especially honored to welcome author Diane Wilson (Dakota) to speak about her incredible book *The Seed Keeper* in October. Please visit [www.nativeplanttrust.org](http://www.nativeplanttrust.org) throughout the season for updates and additional new programming.

As we engage with an ever-widening range of perspectives and opportunities for engaging with the plants and natural world all around us, we welcome your feedback and ideas. Please feel free to reach out to us at [education@nativeplanttrust.org](mailto:education@nativeplanttrust.org) anytime.

We thank you for your continued support, and commitment to native plants!

**NATIVE PLANT TRUST PUBLIC PROGRAMS TEAM**



**BESS PAUPECK**  
Director of Public Programs



**STEPHEN KIELY**  
Public Programs Assistant

**ON THE COVER**  
The Garden Shop at Garden in  
the Woods, Framingham, MA  
© Melissa Blackall/Wildlinks

**RIGHT**  
Big bluestem  
(*Andropogon gerardii*)  
Uli Lorimer © Native Plant Trust

# Contents

## Public Events – In the Garden

Asters After Hours 06

## Public Events – Talks

Artist Talks & Presentations 08

Conservation Library Talks 12

Author Talk 14

Fall Symposium 16

## Courses

Art & Nature 18

Botany & Conservation 20

Herbaria Series 34

Field & Landscape Studies 36

Horticulture & Design 40

Youth & Family 46

**Native Plant Certificate Program Info.** 48

**Registration & Membership** 50

## Native Plant Trust

180 Hemenway Road  
Framingham, MA 01701

**T** 508-877-7630

**F** 508-877-3658

**TTY** 508-877-6553

[education@NativePlantTrust.org](mailto:education@NativePlantTrust.org)  
[NativePlantTrust.org](http://NativePlantTrust.org)

Program catalog is published twice a year by Native Plant Trust. Members receive discounts on all programs. Annual membership dues start at \$40 for individuals. See page 46 for information.

Printed on recycled paper.

*This publication was made possible through the generosity of Jackie and Tom Stone.*

© 2023 Native Plant Trust. All rights reserved. No material in this publication may be reproduced or used in any way without written consent. For permission, contact Editor, Native Plant Trust, 180 Hemenway Road, Framingham, MA 01701.



# Index

Date Program Page

## PUBLIC EVENTS - IN THE GARDEN

9/29 Asters After Hours 6

## PUBLIC EVENTS - TALKS

11/19 Your Story in Seed 8

3/28 Green Photography 10

TBD Conservation Library Talks 12

10/28 Author Talk 14

11/4 Fall Symposium 16

## ART & NATURE

9/24 Nature Sketchbook 18


10/3 Autumn Watercolor 18

10/14 Botany is Survival 19

3/5 Nature Photography 19

3/9 Writing in the Garden 19

For more information and to register online visit:

 [NativePlantTrust.org/education](https://www.NativePlantTrust.org/education)

## BOTANY & CONSERVATION

9/11 Plants 101 20

9/11 Plant Form and Function 20

9/11 Plant Ecology 21

9/11 Plant Families 21

9/19 Native Shrubs (Zoom) 22

9/21 Botanical Inventory 22

9/24 Native Shrubs 22

9/27 Wildflowers (Zoom) 23

9/28 Wildflowers 23

9/28 Invasives ID 23

9/30 Asters & Goldenrods 24

10/7 Intro to Grasses 24

10/15 Plant Families 21

10/30 Framework Trees (Zoom) 25

11/18 Wetland ID 25

11/21 Fire Adaptations 26

1/11 Wildfire Ecosystem 26

1/20 Plant Nutrients 27

1/25 Green Winterscape 27

1/25 ReSeeding RI 28

2/1 Restoration 101 28

2/1 Understanding Soils (Zoom) 29

2/10 Conservation Biology 29

2/17 Understanding Soils 29

2/13 Buttercups 30

2/15 Predatory Plants 30

2/19 NE Orchids 31

2/24 Winter Botany 31

3/21 NE Climbers 31

3/23 Vernal Mustards 32

4/8 Riparian Comms 32

4/20 Framework Trees 25

## HERBARIA SERIES

11/4 UNH Hodgdon 34

2/27 Brown Herbarium 34

3/9 UConn Torrey 34

3/15 Harvard Herbaria 34

## FIELD & LANDSCAPE STUDIES

9/16 LaPlatte River 36

10/1 Bog Plants 36

10/7 American Oaks 37

10/22 Berkshire Botanical 37

10/28 Vines and Creepers 38

4/13 Coastal Field Study 38

## HORTICULTURE & DESIGN

9/11 Designing with Native Plants 40

9/11 Gardening for Pollinators 40

9/30 Site Prep (MV) 41

10/1 Meadows (MV) 41

10/19 Residential Design 42

12/9 Seed Sowing 42

1/23 History of Design 43

2/6 Emerging Trends 43

2/18 Rooted in Land 44

2/22 Meaning of Gardens 44

2/25 Winter Pruning 45

3/17 Winter Pruning 45

4/6 Site Prep (CT) 41

4/6 Meadows (CT) 41

## YOUTH & FAMILY

9/16 Plant Portraits 46

10/21 Monarchs & Milkweed 46

## ABOUT NATIVE PLANT TRUST

Native Plant Trust is the nation's first plant conservation organization and the only one solely focused on New England's native plants. We save native plants in the wild, grow them for gardens and restorations, and educate others on their value and use. We are based at Garden in the Woods, a renowned native plant botanic garden that attracts visitors from all over the world. From this flagship property in Framingham, Massachusetts, 25 staff and many of our 1,500 trained volunteers work throughout New England each year to monitor and protect rare and endangered plants, collect and preserve seeds to ensure biological diversity, detect and control invasive species, conduct research, and offer a range of educational programs. Native Plant Trust also operates a nursery at Nasami Farm in western Massachusetts and manages six sanctuaries in Maine, New Hampshire, and Vermont that are open to the public. Native Plant Trust is among the first organizations worldwide to receive Advanced Conservation Practitioner accreditation by London-based Botanic Gardens Conservation International (BGCI), which included an endorsement by an International Advisory Council representing six continents. Please visit [www.NativePlantTrust.org](https://www.NativePlantTrust.org).

Many of our programs qualify for continuing education units. Visit [NativePlantTrust.org/education](https://www.NativePlantTrust.org/education) for a list of qualifying programs.

Program times are in Eastern Time (US and Canada).

## Public Events – In the Garden

# Asters After Hours

Stroll the Garden after hours to observe the season's stunning asters (*Asteraceae*), goldenrods (*Solidago*), and cardinal flowers (*Lobelia cardinalis*) in the evening glow. Garden admission and light refreshments included with registration.

Garden in the Woods, Framingham, MA

Friday, September 29, 2023, 5 PM – 7 PM

Fee: \$30 (Members) / \$36 (Nonmembers)



Heart-leaved American-aster  
(*Symphyotrichum cordifolium*)  
Dan Jaffe Wilder © Native Plant Trust



Garden in the Woods  
© Melissa Blackall / Wildlinks

## Public Events – Talks

# Artist Talks & Presentations



### Your Story in Seed

Hudson Valley-based artist-miniaturist Sergey Jivetin will once again bring his seed stories project to Garden in the Woods. Sergey will hand-engrave seeds with illustrations based on narratives about plants and their deep connection with farmers, seed savers, naturalists, and enthusiastic gardeners who nurture and preserve them. If you would like to share your personal story of such a relationship between plants and people, bring a relevant seed and our guest will engrave your individual story on it.

There will be a limited number of customized seed engravings created for people who would like to bring sentimental seeds and share a relevant story. For this first-come, first-served program, you must sign up in advance for your 45-minute time slot.

Garden in the Woods, Framingham, MA

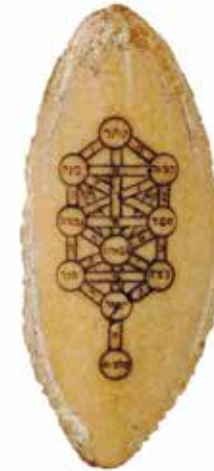
Sunday, November 19, 2023

11 AM – 3 PM

Program Code: ART8014

Instructor: Sergey Jivetin, artist-miniaturist

Fee: \$26 (Members) / \$30 (Nonmembers)





## Green Photography: The Contemporary Anthotype

What is an anthotype? Literally a “flower picture,” anthotypes are plant-based images made from the light-sensitive characteristics of plants. Crushed berries, flower petals, and roots yield colorful emulsions, which are hand-applied to paper and exposed to the sun to produce unique colored images. Due to its ephemeral and unpredictable nature, the anthotype lacked commercial viability and was largely forgotten after its invention in 1842. Because it is nontoxic, low cost, and magically simple, this obscure but poetic photo-imaging method has been rediscovered and is being revived by eco-minded artists around the world. Safe for children and alchemical in nature, the anthotype will intrigue artists, gardeners, scientists, photographers, printmakers—anyone curious about imaging in and with nature. No previous art or photography experience necessary.

An online PowerPoint presentation, short videos, and resource list will introduce the history and how to of the process as well as look at some of the inventive anthotypes being made today. A follow-up, hands-on session in the spring will include foraging for plant materials, preparing plant emulsions, coating papers, and exposure methods. Get introduced to anthotypes this winter and try plant-based printing this spring!

Artist Jesseca Ferguson has worked with handmade antiquarian photographic processes since 1990, becoming intrigued with anthotypes in 2019. A resident of an artists’ co-operative building in downtown Boston, she forages for her plant materials at farmers’ markets and flower shops, then exposes her prints on the roof of her building. Her handmade photographs have been published, exhibited, and collected internationally. Find more of Jesseca’s work at [www.museumofmemory.com](http://www.museumofmemory.com).

Zoom / Online

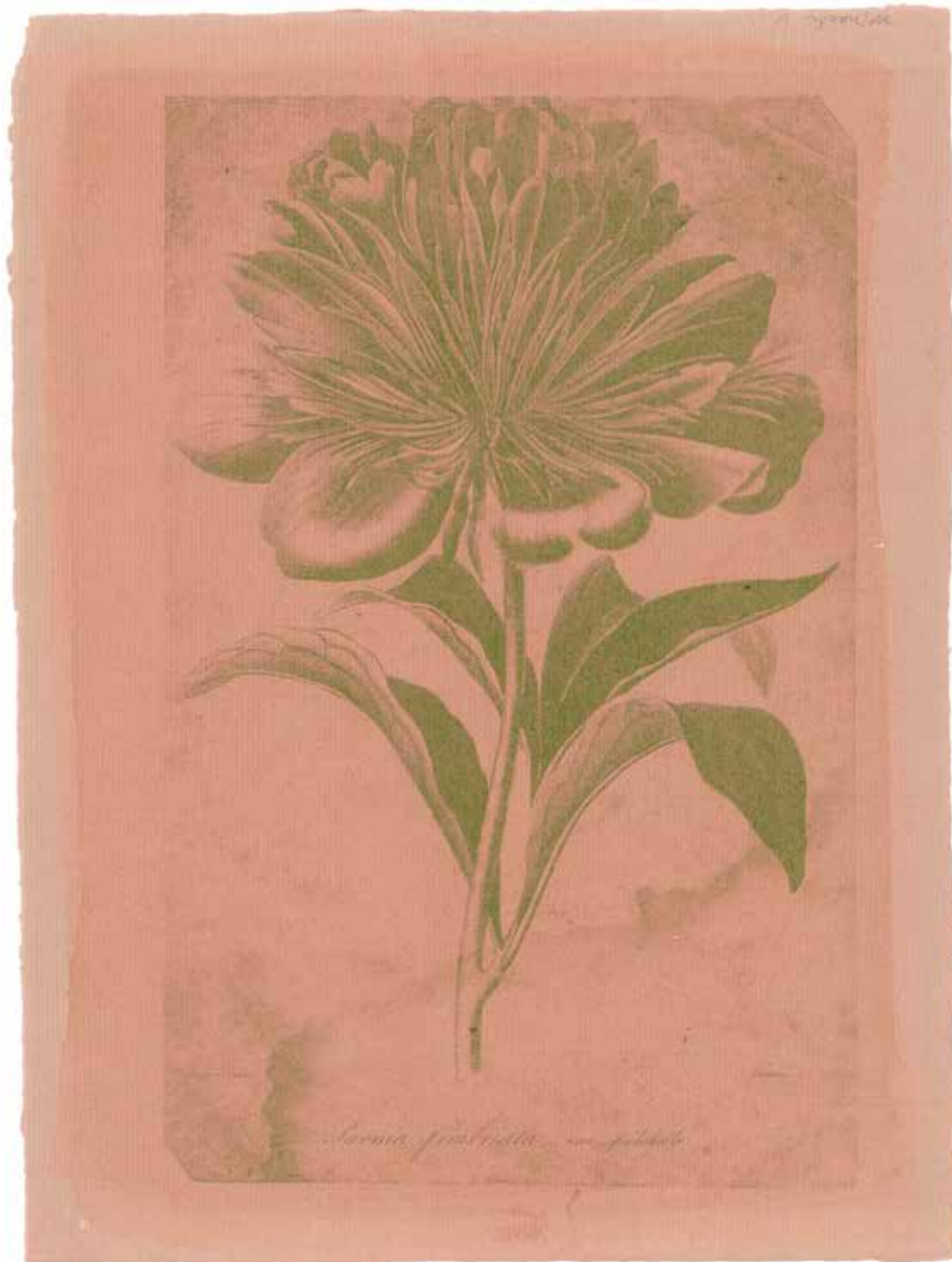
Thursday, March 28, 2024, 6 – 7:30 PM

Program Code: ART2309

Instructor: Jesseca Ferguson, artist

Fee: \$23 (Members) / \$27 (Nonmembers)

Certificate: Elective: Basic or Advanced, Horticulture



# Conservation Library Talks

Native Plant Trust presents the 2023–2024 Conservation Lecture Series, sharing the “Plant Communities of Massachusetts” talk for libraries around the state, free of charge. “Plant Communities of Massachusetts” offers audiences an overview of the extraordinary diversity of native plant communities in the state, with example plants and environmental features. You will gain greater awareness of and appreciation for the area’s habitats as well as knowledge about plant communities’ current environmental status and ways to conserve local natural resources. This statewide initiative is made possible with the support of Massachusetts Cultural Council’s LCC grant program.

To register, please check [www.NativePlantTrust.org/education/classes/](http://www.NativePlantTrust.org/education/classes/) throughout the fall for the date, program format, and registration page.

**Amherst** – Jones Library

**Lawrence** – Lawrence Public Library

**Middleborough** – Middleborough Public Library

**North Attleboro** – Richards Memorial Library

**Orange** – Wheeler Memorial Library

**Sandwich** – Sandwich Public Library

**Springfield** – Springfield City Library

**Wareham** – Wareham Free Library

**Winthrop** – Winthrop Public Library & Museum



# Author Talk



## The Seed Keeper

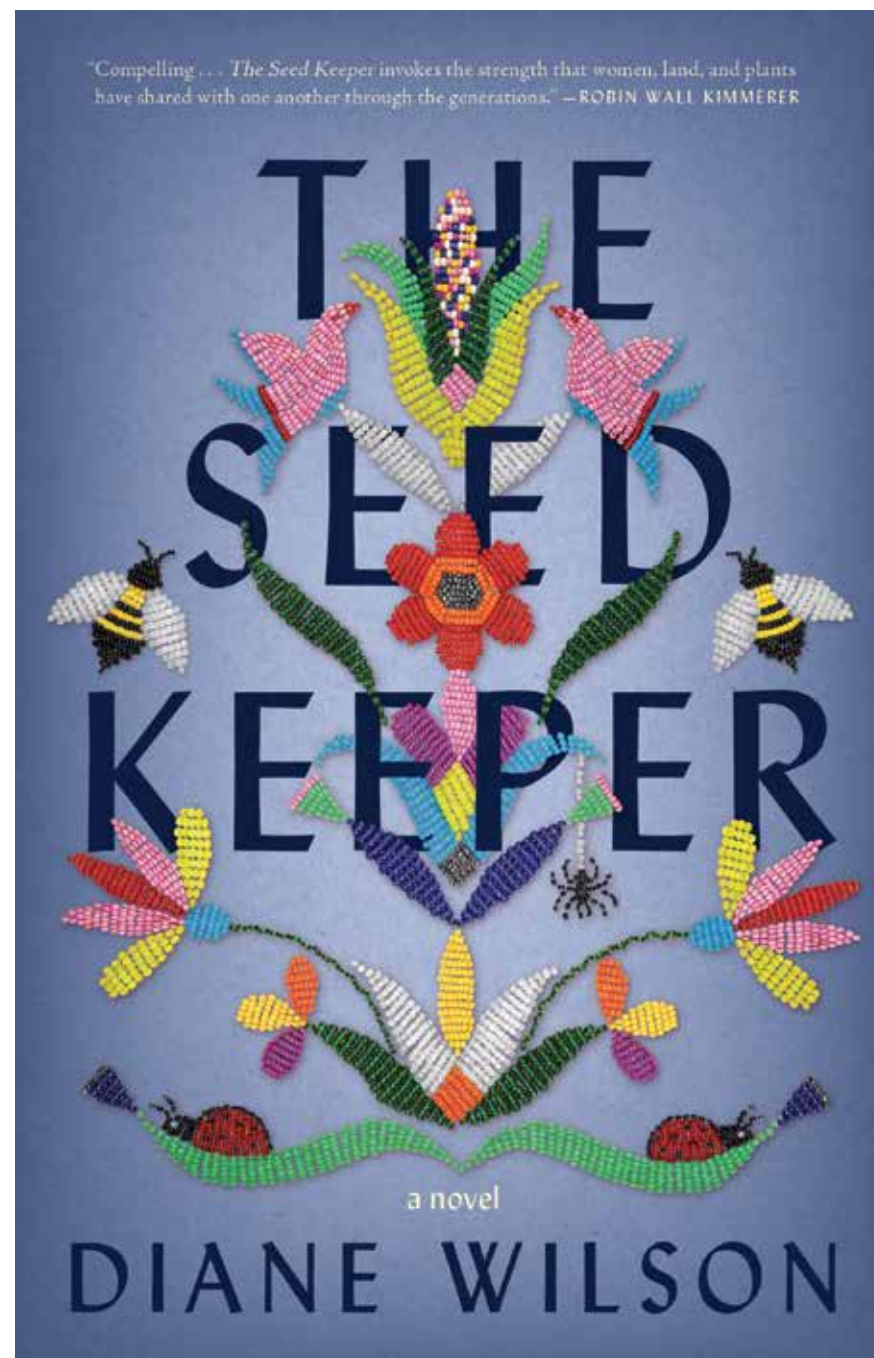
Join author Diane Wilson (Dakota) for a conversation about her award-winning book *The Seed Keeper*. A haunting novel spanning several generations, *The Seed Keeper* follows a Dakota family's struggle to preserve their way of life, and their sacrifices to protect what matters most. Weaving together the voices of four indelible women, *The Seed Keeper* is a beautifully told story of reawakening, of remembering our original relationship to the seeds, and, through them, to our ancestors. The talk will be followed by a book signing with the author. Copies of *The Seed Keeper* will be available for purchase in the Garden shop as well as at the event.

The Cambridge Foundry, 101 Rogers Street, Cambridge, MA

Saturday, October 28, 2023, 3 PM – 4 PM

Program Code: LEC9008

Fee: \$15 (Members) / \$18 (Nonmembers)





# Fall Symposium

## Native Plants and Climate Change

This fall, join us for a symposium focused on the role of native plants in this conversation about the changing nature of our climate. Featuring speakers from the New England region, we will examine current climate change patterns and their implications for the future of the region's plant life, key factors for building climate resilience, and how key players can make resilience possible. Reserve your spot at [www.nativeplanttrust.org](http://www.nativeplanttrust.org) and keep checking our website for the most up-to-date details and information.

Zoom / Online

Saturday, November 4, 2023, 10 AM – 2 PM

Program Code: SYM1012

Fee: \$60 (Members) / \$72 (Nonmembers)



## Courses

# Art & Nature



01

### The Art of Observation: Creating a Nature Sketchbook

We will explore how we see the natural world around us through sketching and watercolor studies. We will consider what it means to look and truly observe. The instructor will demonstrate how sketching and painting help one to really see. No prior experience is needed: the class is designed for various skill levels.

Garden in the Woods, Framingham, MA  
Sundays, September 24, October 1, 8, 2023  
1 – 4 PM

Program Code: ART1007

Instructor: George Hancin, artist and instructor,  
Museum of Fine Arts, Boston, and Worcester  
Art Museum

Fee: \$135 (Members)/\$162 (Nonmembers)

Certificate: Elective: Basic or Advanced,  
Horticulture

### Autumn Watercolor at Garden in the Woods

How well do you really see, how closely do you really observe the natural world? In order to become more aware of the natural world around us, to slow down and begin to really observe and expand our visual intelligence, we will start to capture those observations by making art. Inspired by the season, through this course students will learn different techniques for painting native plants with watercolor in the beautiful autumn foliage. Please note that students will need to purchase or bring their own watercolor supplies.

Garden in the Woods, Framingham, MA

Tuesday, October 3, 10, 17, 24, 2023, 5 – 8 PM

Program Code: ART6002

Instructor: Sepi Golestani, Art Educator, Museum of  
Fine Arts, Boston, and Natick Public Schools

Fee: \$180 (Members)/\$216 (Nonmembers)

Certificate: Elective: Basic or Advanced,  
Horticulture

02



02 © Sepi Golestani



03

### Nature Photography

Dan Wilder's photography has been featured in numerous books, articles, and websites, and he's the first to tell you that anyone of any skill level, with any equipment, can take good photographs. With emphasis on the framing of the shot, subject choice, and some basic technical know-how, this virtual session is designed to give folks of all skill levels ideas to improve their photography.

Zoom / Online

Tuesday, March 5, 2024, 5 – 6 PM

Program Code: ART6068

Instructor: Dan Jaffe Wilder

Fee: \$15 (Members) / \$18 (Nonmembers)

Certificate: Elective: Basic or Advanced,  
Horticulture

### Botany is Survival: How to Use Art to Get the Word Out

In this workshop, artist and environmental educator Kari Percival will introduce how she explores and identifies key scientific concepts, designs visual imagery, and hones wording to share messages. You'll learn how art can enlist allies with a call to action to help rescue our most beloved home and natural communities from extinction. With a hands-on focus on wordsmithing and image-crafting, you will learn how to pair your interest in botany with art to empower an audience of allies with key information, eye-catching images, and tools for action.

Garden in the Woods, Framingham, MA

Saturday, October 14, 2023, 1 PM – 4 PM

Program Code: ART2305

Instructor: Kari Percival, Illustrator and  
Environmental Educator

Fee: \$45 (Members) / \$54 (Nonmembers)

Certificate: Elective: Basic or Advanced,  
Horticulture

### Writing in the Garden

Writers from Emily Dickinson to Edith Wharton and Eudora Welty have found their gardens to be wellsprings of sensory experience that stimulated their writing. In this two-hour workshop, visit the fields and designed gardens at Nasami Farm and write spontaneously in response to prompts—verbal or visual cues provided by the workshop leader—inspired by the surroundings.

Garden in the Woods, Framingham, MA

Saturday, March 9, 2024, 10 AM – 12 PM

Program Code: ART2009

Instructor: Jane Roy Brown, Writer/Editor, Native  
Plant Trust

Fee: \$30 (Members) / \$36 (Nonmembers)

Certificate: Elective: Basic or Advanced,  
Horticulture

[NativePlantTrust.org/education](https://NativePlantTrust.org/education)

03 © Melissa Blackall/Wildlinks

## Courses

# Botany & Conservation

### Plants 101: Introduction to the Green World

Explore New England's plant life in this foundational, self-directed online course. Learn what plants are, how they function, and why they are essential to all life on Earth. The course introduces many of the region's native and non-native plants.

Online, Self-Paced

(Please note this is a fully self-guided course, with no instructor present.)

Course access from Monday, September 11, 2023, 12 PM through Friday, December 29, 2023, 12 PM.

**PLEASE NOTE: Registration closes Monday, October 30, 2023, at 12 PM or when all spaces fill, whichever comes first.**

Program Code: BOTO101

Fee: \$80 (Members) / \$98 (Nonmembers)

Certificate: Elective: Basic or Advanced, Botany



01

### Plant Form and Function

This introduction to botany covers the basics of plant anatomy and physiology and addresses the fundamentals of the plant kingdom. We will take a microscopic look at roots, stems, leaves, and their component tissues. We will also examine flowers, fruits, and seeds and discuss pollination, fertilization, dispersal, and germination, with an emphasis on the relationship between plant form and function. This Basic Certificate online core course is self-paced, requires fieldwork, and provides opportunities for peer discussion. An instructor will guide you in your learning, review your assignments, and answer your questions.

Online, self-paced

Course access from Monday, September 11, 2023, 12 PM through Friday, December 29, 2023, 12 PM.

**PLEASE NOTE: Registration closes Monday, October 30, 2023, at 12 PM or when all spots are filled. Course access ends on Friday, December 29, 2023, 12 PM.**

Program Code: CERO101

Instructor: George LoCascio, assistant professor, Mount Wachusett Community College

Fee: \$150 (Members) / \$200 (Nonmembers)

Certificate: Basic Certificate Core



02

### Plant Families

In this foundational course, you will learn the botanical terms used to describe plants and flowers, the evolutionary/phylogenetic basis for classification, and the identifying characteristics for several major plant families common to New England. Participants will learn through assignments designed for outdoor observation and indoor dissection of plant material. This Basic Certificate online core course is self-paced, requires fieldwork and provides opportunities for peer discussion. An instructor will guide you in your learning, review your assignments, and answer your questions. We recommend *Botany in a Day, Sixth Edition* by Thomas Elpel for the best learning experience in this course. It can be purchased at our Garden Shop.

Online, self-paced

Course access from Monday, September 11, 2023, 12 PM through Friday, December 29, 2023, 12 PM.

**PLEASE NOTE: Registration closes Monday, October 30, 2023, at 12 PM or when all spots are filled. Course access ends on Friday, December 29, 2023, 12 PM.**

Program Code: CERO102

Instructor: Neela de Zoysa, botanist, adjunct faculty, landscape architecture, Boston Architectural College

Fee: \$150 (Members) / \$200 (Nonmembers)

Certificate: Basic Certificate Core

OR

Garden in the Woods, Framingham, MA

Sundays, October 15, 22, 29, 2023, 12:30 - 4:30 PM

Program Code: BOT2260

Instructor: Neela de Zoysa, botanist, adjunct faculty, landscape architecture, Boston Architectural College

Fee: \$216 (Members) / \$264 (Nonmembers)

Certificate: Basic Certificate Core

### Plant Ecology

This overview of plant ecology addresses the distribution and abundance of plants and their interactions with other organisms and the physical environment. We will explore factors that affect plants as individuals, populations, and communities, such as life history, resource use, competition, and animal-plant interactions (e.g., pollination, dispersal, herbivory). This Basic Certificate online core course is self-paced, requires fieldwork, and provides opportunities for peer discussion. An instructor will guide you in your learning, review your assignments, and answer your questions.

Online, self-paced

Course access from Monday, September 11, 2023, 12 PM through Friday, December 29, 2023, 12 PM.

**PLEASE NOTE: Registration closes Monday, October 30, 2023, at 12 PM or when all spots are filled. Course access ends on Friday, December 29, 2023, 12 PM.**

Program Code: CERO101

Instructor: Alan Anacheka-Nasemann, professional wetland specialist, ecologist, and wetland scientist

Fee: \$150 (Members) / \$200 (Nonmembers)

Certificate: Basic Certificate Core



03

### Native New England Shrubs

Shrubs vary widely in size, shape, color, bark, flower, and fruit. This course introduces you to many of the native New England shrub species that can be found at Garden in the Woods and throughout the local ecoregion. The learner-centered approach encourages students to develop skills that will help them identify any shrub through dichotomous keys, field guides, or verifying plant ID apps.

#### Zoom / Online

Tuesday, September 19, 26, October 3, 2023,  
6:30 – 8:30 PM

Program Code: BOT3300

Instructor: Brian Colleran, restoration ecologist

Fee: \$90 (Members) / \$108 (Nonmembers)

Certificate: Basic Certificate Core

#### OR

Garden in the Woods, Framingham, MA

Sunday, September 24, 2023  
9:30 AM - 3:30 PM

Program Code: BOT3300

Instructor: Brian Colleran, restoration ecologist

Fee: \$90 (Members) / \$108 (Nonmembers)

Certificate: Basic Certificate Core

### Botanical Inventory Methods and Techniques

This is an introduction to botanical inventory methods for cataloging the vascular plants in a natural landscape. We will cover the essential steps of planning the survey, including use of field guides, aerial photography, Geographic Information Systems (GIS) resources, sampling strategies, and field-data form design. Next, we will practice these methods by conducting a field survey on conserved land, identifying and recording the plant species and habitats we encounter. You will have an opportunity to compile the inventory and write a report.

Live virtual and Garden in the Woods  
Framingham, MA

Thursdays, September 21 and 28, 2023  
6:30 – 8:30 PM (live virtual) and  
Saturday, September 23, 2023, 10:30 AM – 3:30 PM  
(Garden in the Woods)

Program Code: BOT2050

Instructor: Neela de Zoysa, botanist,  
adjunct faculty, landscape architecture,  
Boston Architectural College

Fee: \$135 (Members) / \$162 (Nonmembers)

Certificate: Advanced Core, Botany



04

### Wildflowers of New England

This course provides a comprehensive introduction to native plants, including their identification, ecology, and conservation. We explore New England's native plants by studying key identification features of flowers, leaves, and stems; family characteristics; growth patterns; pollinators; seed dispersers; and habitats. You will learn basic botanical skills and tools for identifying wildflowers and study pollination and coevolution of flower structure and design, habitats and ecology, and conservation concerns.

#### Zoom / Online

Wednesday, September 27, October 4, 11, 18, 2023,  
5:30 - 8:30 PM

Program Code: BOT3000

Instructor: Neela de Zoysa, Botanist, Adjunct  
Faculty Landscape Architecture - Boston  
Architectural College

Fee: \$216 (Members) / \$264 (Nonmembers)

#### OR

Garden in the Woods, Framingham, MA

Thursday, September 28, October 5, 12, 19, 2023,  
12:30 - 3:30 PM

Program Code: BOT3000

Instructor: Neela de Zoysa, Botanist,  
Adjunct Faculty Landscape Architecture  
Boston Architectural College

Fee: \$216 (Members) / \$264 (Nonmembers)

Certificate: Basic Certificate Core

### Invasive Plants: Identification, Documentation, and Control

This course addresses the identification and control of many of the invasive plant species that are an unwelcome and persistent presence in forests, fields, and wetlands. Through visual presentation, close examination of herbarium specimens, and field study, we will examine the impacts of several invasive species and discuss methods for managing invasive plant populations.

Garden in the Woods, Framingham, MA, and  
Barber Reservation, Sherborn, MA

Thursday, September 28, 2023, 6 – 8 PM  
(Garden in the Woods) and  
Saturday, September 30, 2023, 10 AM – 2 PM  
at Barber Reservation

Program Code: BOT5130

Instructor: Erik Sechler, Ecological Programs  
Coordinator, Native Plant Trust

Fee: \$108 (Members) / \$132 (Nonmembers)

Certificate: Advanced Core, Botany



05



## 06 Introduction to Grasses Identification

Many people are apprehensive about identifying grasses. With a little practice, however, you can learn to recognize common species using plain English vocabulary and naked-eye characteristics. Lauren Brown, co-author with Ted Elliman of *Grasses, Sedges, Rushes: An Identification Guide*, will introduce these beautiful and abundant plants. We strongly recommend reading the text for the best learning experience in this class. It can be purchased in our Garden Shop.

Classroom and field site in southern CT  
Saturday, October 7, 2023, 9 AM – 1 PM  
Program Code: BOT3523

Instructor: Lauren Brown, author of *Weeds and Wildflowers in Winter, Grasses: An Identification Guide, and Grasses, Sedges, Rushes: An Identification Guide*

Fee: \$60 (Members) / \$72 (Nonmembers)

Certificate: Elective: Basic or Advanced, Botany



07

07 Bushy bluestem (*Andropogon glomeratus* var. *glomeratus*) © Dan Jaffe Wilder

## Framework Trees of New England

Forests are a dominant feature of the New England landscape. This course covers the history, changes in composition, and ecology of the region's forest from the Ice Age through European settlement. We explore the impact of past natural and human disturbances on the landscape and learn how current forestry practices shape forest communities. You will learn to identify native trees, their habitats, and their communities.

Zoom / Online

Monday, October 30, November 6, 13, 20, 2023  
5 – 8 PM

Program Code: BOT3200

Instructor: Jeff Horan, forest ecologist, U.S. Fish and Wildlife Service

Fee: \$180 (Members)/\$216 (Nonmembers)

Certificate: Basic Certificate Core

OR

Garden in the Woods, Framingham, MA

Saturday, April 20 and Sunday, April 21, 2024  
10 AM – 4 PM

Program Code: BOT3200

Instructor: Jeff Horan, forest ecologist, U.S. Fish and Wildlife Service

Fee: \$180 (Members) / \$216 (Nonmembers)

Certificate: Basic Certificate Core

## Wetland Identification and Delineation

This course introduces the principal elements of wetland identification, including wetland hydrology, hydric soils, and hydrophytic plants. We will identify plants in the field, place a delineation line, and utilize web resources.

Garden in the Woods, Framingham, MA

Saturday, November 18, 2023, 10 AM – 4 PM

Program Code: WET2010

Instructor: Bill Kuriger, botanist

Fee: \$90 (Members) / \$108 (Nonmembers)

Certificate: Advanced Core, Botany



08

08 Golden groundsel (*Packera aurea*), Arthur Haines © Native Plant Trust



09

## Plant Adaptations to Fire

A wide range of plant species have evolved a remarkable array of adaptations that enable individual plants to survive or grow after being subject to fire. A diverse assortment of these fire-adapted (or pyrophytic) plant species can be found growing in wildlands found all across New England, frequently in areas where burning has occurred sometime in the past. This class will survey a taxonomically and ecologically diverse assortment of plant species and examine some of the adaptations that allow these plants to either survive or grow after experiencing fire.

Zoom / Online

Tuesday, November 21, 2023, 6 – 7 PM

Program Code: BOT1103

Instructor: Sam Gilvarg, fire ecologist; Ph.D. candidate in forest resource management at SUNY College and Environmental Science and Forestry

Fee: \$15 (Members) / \$18 (Nonmembers)

Certificate: Elective: Basic or Advanced, Botany

## Ecosystem Response to Wildfire

In New England, the survival of many ecosystems is predicated upon the occurrence of disturbances, such as wildland fire, which alter the environment. Without these events, habitats that are home to many endangered species can undergo changes that intrinsically threaten the survival of imperiled organisms. However, not every ecosystem will respond to fire in the same way—and not every fire will create the same impacts. This course will survey the ecological response of select fire-prone habitats to being burned and assess the impacts of fires occurring at varying severity, frequency, and size on them.

Zoom / Online

Thursday, January 11, 2024, 5 – 7 PM

Program Code: BOT1106

Instructor: Sam Gilvarg, fire ecologist; Ph.D. candidate in forest resource management at SUNY College and Environmental Science and Forestry

Fee: \$30 (Members) / \$36 (Nonmembers)

Certificate: Elective: Basic or Advanced, Botany

## Plant Nutrients

What are mineral nutrients, and how do plants use them? What are the signs of deficiencies and toxicities? In this course, you will learn some mineral nutrient basics through an overview of soils, chemistry, and plant anatomy. We will explore how plants acquire, use, and translocate mineral nutrients. We will also learn how to determine the impact of mineral nutrients on a plant's health and how to help plants suffering from improper nutrition.

Zoom / Online

Saturday, January 20, 27, February 3, 2024  
10 AM – 12 PM

Program Code: BOT3908

Instructor: George LoCascio, assistant professor, Mount Wachusett Community College

Fee: \$90 (Members) / \$108 (Nonmembers)

Certificate: Elective: Basic or Advanced, Botany



11

## Green in the Winterscape

A surprising number of plants remain green through the winter; lichens, mosses and liverworts, ferns, ericaceous shrubs and evergreen trees, and many more. Which plants stay green, how, and why? In this class, you will learn how to recognize and identify the groups of evergreen plants and explore evolutionary and strategies for year-round foliage.

Zoom / Online

Thursday, January 25, 2024, 1 – 4 PM

Program Code: BOT3326

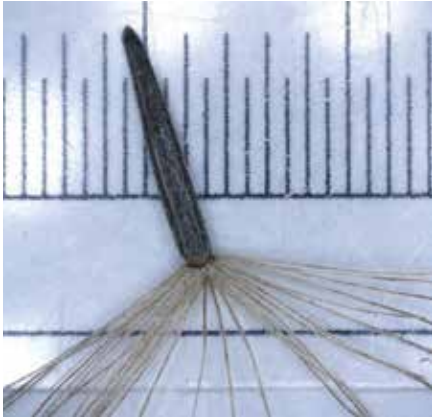
Instructor: Neela de Zoysa, Botanist, Adjunct Faculty Landscape Architecture, Boston Architectural College

Fee: \$45 (Members) / \$54 (Nonmembers)

Certificate: Elective: Basic or Advanced, Botany



10



12

## Restoration Ecology 101

Ecological restoration is a discipline with many applications. This webinar is meant for those who want to know what the term “restoration” means in an ecological context, rather than for those who have experience conducting restoration. Ideal students would be those who have an interest in making their lands more friendly to native flora and fauna and want to take their first steps, but don’t know what to do.

Zoom / Online

Thursday, February 1, 2024, 6 – 7 PM

Program Code: BOT3816

Instructor: Brian Colleran, restoration ecologist

Fee: \$15 (Members) / \$18 (Nonmembers)

Certificate: Elective: Basic or Advanced, Botany

## ReSeeding Rhode Island

In 2022, Rhode Island Plant Society (RIWPS) began the ReSeeding Rhode Island project, an initiative to increase the availability of ecotypic seed and plants within the state. In this session, you will learn from ReSeeding Rhode Island’s seed collector, Shannon Kingsley, about ecotypes and ecoregions, proper protocols for collection of wild seeds, and the types of species collected and grown by ReSeeding RI. Shannon will also delve into her experiences collecting wild seeds, the initiative’s partnerships with its wild seedbed growers, and the developing educational aspects of the project.

Zoom / Online

Thursday, January 25, 2024, 5 – 6 PM

Program Code: BOTW202

Instructor: Shannon Kingsley,  
RIWPS Seed Collector

Fee: \$15 (Members) / \$18 (Nonmembers)

Certificate: Elective: Basic or Advanced, Botany



13

## Understanding and Managing Soils

This course explores the biotic and abiotic components that create native soils and explains how these factors inform local flora. We will take a closer look at soil structure and soil biology in miniature lab experiments and discuss best management practices for healthy soils and landscapes.

Zoom / Online

Thursdays, February 1, 8, 2024 5 – 8 PM

Program Code: HOR3604

Instructor: Alexis Doshas, nursery manager

Fee: \$108 (Member) / \$132 (Nonmember)

Certificate: Basic Certificate Core

OR

Nasami Farm, Whately, MA

Saturday, February 17, 2024, 10 AM – 4 PM

Program Code: HOR3604

Instructor: Alexis Doshas, nursery manager

Fee: \$108 (Member) / \$132 (Nonmember)

Certificate: Basic Certificate Core

## Conservation Biology

This introduction to conservation biology and biodiversity covers the factors that make a species vulnerable to extinction and the strategies and tools that can be used to protect plants and ecosystems. The course explores the interdisciplinary nature of conservation biology through readings, group exercises, and video clips. Participants receive a bibliography of resources for further study.

Zoom / Online

Saturday, February 10, 17, 24, 2024, 10 AM – 2 PM

Program Code: BOT5100

Instructor: George LoCascio, assistant professor,  
Mount Wachusett Community College

Fee: \$180 (Members) / \$216 (Nonmembers)

Certificate: Advanced Core, Botany



14

## The Buttercup Family

Using a PowerPoint presentation and a close look at herbarium specimens, this two-part class will cover all the native and a number of the introduced members of the buttercup family (Ranunculaceae) that grow in natural habitats in New England. In addition to the ‘true’ buttercups (*Ranunculus*), buttercup family genera that will be discussed include baneberry (*Actaea*), columbine (*Aquilegia*), anemone (*Anemone*), marsh marigold (*Caltha*), clematis (*Clematis*), goldenseal (*Hydrastis*), meadow rue (*Thalictrum*) and globeflower (*Trollius*), a varied and strikingly beautiful group of wildflowers.

Garden in the Woods, Framingham, MA

Tuesday, February 13 and 20, 2024, 6 – 8 PM

Program Code: BOT3019

Instructor: Ted Elliman, botanist, and author of *Wildflowers of New England*

Fee: \$60 (Members) / \$72 (Nonmembers)

Certificate: Elective: Basic or Advanced, Botany



15

16



## Predatory Plants

Insectivorous and parasitic plants are an anomaly in the plant world, where self-sufficiency is the norm. This class covers the more familiar pitcher plants (*Sarracenia*), sundews (*Drosera*), and dodder vines (*Cuscuta*) as well as lesser-known groups such as the bladderworts (*Utricularia*) and broom rapes (*Orobanchaceae*). Learn about the habitats, unusual life cycles, and curious behavior of these New England plants.

Zoom / Online

Thursday, February 15, 2024, 3 – 6 PM

Program Code: BOT2317

Instructor: Neela de Zoysa, botanist, adjunct faculty, landscape architecture, Boston Architectural College

Fee: \$45 (Members) / \$54 (Nonmembers)

Certificate: Elective: Basic or Advanced, Botany

## New England Orchids

Orchidaceae is one of the largest plant families in the world, and there are 50 orchid species native to New England, from showy lady’s-slipper (*Cypripedium reginae*) to rose pogonia (*Pogonia ophioglossoides*). While some species are common, many are of conservation concern. This session provides context for understanding native orchid habitats, diversity, and conservation issues. You will learn identification techniques, pollination strategies, and lifecycle stages for native orchids.

Zoom / Online

Monday, February 19, 2024, 3-6 PM

Program Code: BOT3036

Instructor: Neela de Zoysa, botanist, adjunct faculty, landscape architecture, Boston Architectural College

Fee: \$45 (Members)/\$54 (Nonmembers)

Certificate: Elective: Basic or Advanced, Botany



17

## Winter Botany

Join us to investigate the taxonomic characteristics of deciduous, evergreen, and some herbaceous plants in winter. You will learn to use a dichotomous key and then identify a large inventory of twig and plant specimens before practicing these skills outdoors.

Garden in the Woods, Framingham, MA

Saturday, February 24, 2024, 9:30 AM – 3:30 PM

Program Code: BOT3317

Instructor: Bill Kuriger, botanist

Fee: \$90 (Members) / \$108 (Nonmembers)

Certificate: Elective: Basic or Advanced, Botany

## New England Climbers

Native climbers are an ecologically and taxonomically varied group of plants. They range from rare and vulnerable species, such as Allegheny vine (*Adlumia fungosa*) and the American climbing fern (*Lygodium palmatum*) to those proliferating due to forest fragmentation and warming climate, such as wild grapes (*Vitis spp*) and poison ivy (*Toxicodendron radicans*). Learn about 50 climbers and become familiar with identification characteristics.

Zoom / Online

Thursday, March 21, 2024, 5 – 8 PM

Program Code: BOT3020

Instructor: Neela de Zoysa, botanist, adjunct faculty, landscape architecture, Boston Architectural College

Fee: \$45 (Members) / \$54 (Nonmembers)

Certificate: Elective: Basic or Advanced, Botany



## Vernal Mustards

Some mustard family (Brassicaceae) plants are among the earliest to bloom in spring in fields, woods, and wetlands, but because of their close resemblance to one another can be a challenge to identify. Using slides, herbarium specimens, and a walk in the neighborhood near Garden in the Woods, this class will focus on the identification, habitat preferences, and New England distributions of 20-25 native and introduced spring-flowering species in the mustard family.

Garden in the Woods, Framingham, MA

Saturday, March 23, 2024, 10 AM – 1 PM

Program Code: PDW3333

Instructor: Ted Elliman, botanist and author of *Wildflowers of New England*

Fee: \$45 (Members) / \$54 (Nonmembers)

Certificate: Elective: Basic or Advanced, Botany



19

## Riparian Communities

River shores and stream banks have unique riparian vegetation that is adapted to changing water levels. In this virtual program, we will follow the Sudbury and Assabet rivers from the watershed's headwaters in Westborough to its junction with the Merrimack River in Lowell. Along the way, we will encounter Atlantic cedar swamps, floodplain forests, shrub swamps, emergent marshes, and oxbow lakes as well as the species that characterize them. We will also learn about threats posed by dams, clearing, and pollution.

Zoom / Online

Monday, April 8, 2024, 1 – 3 PM

Program Code: BOT1151

Instructor: Neela de Zoysa, botanist, adjunct faculty, landscape architecture, Boston Architectural College

Fee: \$30 (Members) / \$36 (Nonmembers)

Certificate: Elective: Basic or Advanced, Botany



18



# Herbaria Series

Join leaders of herbaria across New England to learn about what herbaria are, why they exist, their contributions to botany, and how they are maintained. These are unique experiences to see the inside of facilities that are usually only accessed by students and researchers.

**UNH Hodgdon Herbarium, Durham, NH**

Saturday, November 4, 2023, 2 – 3 PM

Program Code: BOT6018

**Brown University Herbarium, Providence, RI**

Tuesday, February 27, 2024, 5 – 6 PM

Program Code: BOT6013

**UConn Torrey Herbarium, Storrs, CT**

Saturday, March 9, 2024, 2 – 3 PM

Program Code: BOT6017

**Harvard University Herbaria, Cambridge, MA**

Friday, March 15, 2024, 2 – 3 PM

Program Code: BOT6014

Fee: \$15 (Members) / \$18 (Nonmembers)

Certificate: Elective: Basic or Advanced, Botany



## Courses

# Field & Landscape Studies

### LaPlatte River Marsh

Join us at the LaPlatte River mouth to learn what makes its wetlands one of just eight wetland complexes in Vermont with Class I wetland status. We will explore a diversity of floodplain forests, sand beaches, marshes, and rich uplands. LaPlatte River Marsh Natural Area is filled with numerous rare and unusual wetland species, including plants in the Beggar-ticks genus (*Bidens*) and in the sedge family (*Cyperaceae*).

LaPlatte River Marsh, Shelburne, VT

Saturday, September 16, 2023, 12 – 3 PM

Program Code: FDT9011

Instructor: Aaron Marcus, assistant botanist,  
Vermont Fish & Wildlife Service

Fee: \$53 (Members) / \$60 (Nonmembers)

Certificate: Field: Basic or Advanced, Botany



01

01 Smooth saw-sedge (*Cladium mariscoides*)  
© Donald Cameron

02



### Bog Plants

One of Thoreau's beloved landscapes, referenced often in his writings, Gowing's Swamp is a rare and beautiful bog in a kettle hole below a glacial ridge. We will walk the loop around the bog and explore the thriving community of northern bog plants such as pitcher plant (*Sarracenia purpurea*), bog rosemary (*Andromeda polifolia*), bog laurel (*Kalmia polifolia*), small cranberry (*Vaccinium oxycoccos*), large cranberry (*Vaccinium macrocarpon*), and black spruce (*Picea mariana*).

Gowing's Swamp, Concord, MA  
(Sudbury Valley Trustees Property)

Sunday, October 1, 2023, 1 – 3 PM

Program Code: FDT1113

Instructor: Neela de Zoysa, botanist,  
adjunct faculty, landscape architecture,  
Boston Architectural College

Fee: \$30 (Members) / \$36 (Nonmembers)

Certificate: Field: Basic or Advanced, Botany

02 Large cranberry (*Vaccinium macrocarpon*)  
Arthur Haines © Native Plant Trust



03

### New Takes on Historic Landscapes: Berkshire Botanical Garden

Join us for a tour of Berkshire Botanical Garden with Director of Horticulture Eric Ruquist. We'll examine the historic nature of one of New England's oldest public display gardens and, alongside the more traditional garden features such as an herb garden and sun and shade borders, we will explore a native meadow seeded in the fall of 2021 and meander through the recently installed, labyrinthine hedge space in Lucy's Topiary Garden. Of course, you'll also get to enjoy the fall foliage in one of the best places for leaf-peeping.

Berkshire Botanical Garden, Stockbridge, MA

Sunday, October 22, 2023, 1 – 3 PM

Program Code: HDT5013

Instructor: Eric Ruquist, director of horticulture,  
Berkshire Botanical Garden

Fee: \$30 (Members) / \$36 (Nonmembers)

Certificate: Landscape: Basic or Advanced,  
Horticulture

### The American Oaks: Diversity, Ecology, and Identification

Join Executive Director of The Polly Hill Arboretum (PHA) Tim Boland for a lecture and tour of the PHA herbarium and living plant collections to understand the great diversity of oaks found throughout North America and locally in New England. Tim paints a picture of the genus *Quercus*, including its fascinating evolutionary history and challenges posed by climate change. He shows us how to identify most of the twelve species native to New England and offers guidance on species selection, installation, and maintenance for establishing oak trees in our managed landscapes. Tim will also share his work saving oaks from extinction as part of an international effort to conserve vulnerable oaks around the world.

Polly Hill Arboretum, West Tisbury, MA

Saturday, October 7, 2023, 10 AM – 12 PM

Program Code: HOR8028

Instructor: Tim Boland, Executive Director,  
The Polly Hill Arboretum

Fee: \$30 (Members) / \$36 (Nonmembers)

Certificate: Landscape: Basic or Advanced,  
Horticulture

[NativePlantTrust.org/education](https://www.nativeplanttrust.org/education)

03 White oak (*Quercus alba*) © Adelaide Pratt

04



04 © Berkshire Botanical Garden

## Vines and Creepers

Wetland and disturbed areas are often a tangle of woody and herbaceous vines, creepers, brambles, and briars. Ever wonder about the differences among these groups of plants and how they twine, creep, climb, and scramble? Learn to identify a dozen species on this easy walk through successional vegetation.

Wolbach Farm, Sudbury, MA  
(Sudbury Valley Trustees property)

Saturday, October 28, 2023, 2 – 4 PM

Program Code: FDT8059

Instructor: Neela de Zoysa, botanist,  
adjunct faculty, landscape architecture,  
Boston Architectural College

Fee: \$30 (Members) / \$36 (Nonmembers)

Certificate: Field: Basic or Advanced, Botany



06

## Coastal Field Study at Haile Farm Preserve

During this field study, we will explore the unique ecology and climate of Rhode Island's coastline at Haile Farm Preserve in Warren. From red maple woodlands to large swaths of salt marsh, Haile Farm Preserve offers rich examples of the botanical diversity that can be found along coastal areas. You will learn about the plant species growing in these different habitats, the ecological importance of salt marshes, and how to collect a proper voucher specimen. Shannon will also discuss some of the species she collected at Haile Farm Preserve for Rhode Island Wild Plant Society's ReSeeding Rhode Island initiative.

Haile Farm Preserve, Warren, RI  
(Warren Land Conservation Trust property)

Saturday, April 13, 2024, 10 AM – 2 PM

Program Code: FDT8062

Instructor: Shannon Kingsley, botanist

Fee: \$60 (Members) / \$72 (Nonmembers)



05



## Courses

# Horticulture & Design

### Designing with Native Plants

This online course teaches the basics of designing with native plants and shows how to incorporate native plants into the garden and landscape. Discover the variety of native plants found throughout New England and learn how to design a visually interesting landscape that also supports biodiversity. You can complete the course at your own pace. It typically takes at least 12 hours to complete.

#### Online, self-paced

*(Please note this is a fully self-guided course, with no instructor present.)*

Course access from Monday, September 11, 2023, 12 PM through Friday, December 29, 2023, 12 PM.

**PLEASE NOTE: Registration closes Monday, October 30, 2023, at 12 PM or when all spaces fill, whichever comes first.**

Program Code: HORO100

Fee: \$80 (Members) / \$98 (Nonmembers)

Certificate: Elective: Basic or Advanced, Horticulture



01

#### Online, self-paced

*(Please note this is a fully self-guided course, with no instructor present.)*

Course access from Monday, September 11, 2023, 12 PM through Friday, December 29, 2023, 12 PM.

**PLEASE NOTE: Registration closes Monday, October 30, 2023, at 12 PM or when all spaces fill, whichever comes first.**

Program Code: HORO101

Fee: \$80 (Members) / \$98 (Nonmembers)

Certificate: Elective: Basic or Advanced, Horticulture

02



### Gardening for Pollinators

This online course teaches how to convert a yard into productive pollinator habitat. Learn about issues associated with pollinator decline and current conservation efforts, then explore a variety of pollinators and the native plants that support their life cycles. The course also covers basic pollinator garden design and provides step-by-step instructions for selecting plants and installing and maintaining these habitats. You can complete the course at your own pace. It typically takes at least 12 hours to complete.

#### Online, self-paced

*(Please note this is a fully self-guided course, with no instructor present.)*

Course access from Monday, September 11, 2023, 12 PM through Friday, December 29, 2023, 12 PM.

**PLEASE NOTE: Registration closes Monday, October 30, 2023, at 12 PM or when all spaces fill, whichever comes first.**

Program Code: HORO101

Fee: \$80 (Members) / \$98 (Nonmembers)

Certificate: Elective: Basic or Advanced, Horticulture

### Site Preparation for Landscape Transformation

Many people consider reducing lawns, converting hayfields, cleaning out weed patches, and otherwise transforming landscapes into pollinator gardens or meadows with native plants. Site preparation is critical, but it is often overlooked in the quest for a finished appearance. This primer covers planning, timelines, and online sources of site information and products.

Polly Hill Arboretum, West Tisbury, MA (Martha's Vineyard)

Saturday, September 30, 2023, 1 – 3:30 PM

Program Code: HOR8028

Instructor: Kathy Connolly, landscape designer, Speaking of Landscapes, LLC

Fee: \$38 (Members) / \$45 (Nonmembers)

Certificate: Elective: Basic or Advanced, Horticulture

#### OR

Connecticut Forest and Parks Association  
Rockfall, CT

Saturday, April 6, 2024, 9:30 AM – 12 PM

Program Code: HOR8028

Instructor: Kathy Connolly, landscape designer, Speaking of Landscapes, LLC

Fee: \$38 (Members) / \$45 (Nonmembers)

Certificate: Elective: Basic or Advanced, Horticulture

03



### Meadows 1-2-3

Learn how native plant meadow-making differs from other forms of horticulture. We will discuss site selection, site preparation, site design, plant selection, planting, and what to expect in years 1, 2, and 3. This program is appropriate for all learning levels, and extensive resource material is provided.

Polly Hill Arboretum, West Tisbury, MA (Martha's Vineyard)

Sunday, October 1, 2023, 1 – 4 PM

Program Code: HOR8001

Instructor: Kathy Connolly, landscape designer, Speaking of Landscapes, LLC

Fee: \$45 (Members)/\$54 (Nonmembers)

Certificate: Elective: Basic or Advanced, Horticulture

#### OR

Connecticut Forest and Parks Association  
Rockfall, CT

Saturday, April 6, 2024, 1 – 4 PM

Program Code: HOR8001

Instructor: Kathy Connolly, landscape designer, Speaking of Landscapes, LLC

Fee: \$45 (Members) / \$54 (Nonmembers)

Certificate: Elective: Basic or Advanced, Horticulture

## Residential Landscape Design

This multi-session course teaches and applies the landscape design process in residential spaces. Our workshop sessions focus on design methods using site analysis techniques and schematic design tools. We will first address overarching design concepts and then discuss criteria for plant choice and placement within that context. You will learn to create and implement base maps, site analysis, design concepts, spatial relationships, plant palettes, and communication through weekly development of your own design project.

Zoom / Online

Thursday, October 19, 26, November 2, 9, 16, 2023,  
5 – 8 PM

Program Code: HOR3999

Instructor: Cheryl Salafino, Landscape Designer,  
Dancing Shadows Garden Design, MCH  
(Massachusetts Certified Horticulturist)

Fee: \$225 (members) / \$270 (nonmembers)

Certificate: Advanced Core, Horticulture

## Native Seed Sowing Workshop

Join Erin Hammes, Plant Records and Production Horticulturist at Native Plant Trust, for this native seed sowing workshop. Learn about our native seeds and then get your hands in the soil to sow some seeds that you can take home.

Long Hill, Beverly, MA  
(The Trustees of Reservations property)

Saturday, December 9, 2023, 2 – 3:30 PM

Program Code: HOR3099

Instructor: Erin Hammes, Plant Records and  
Production Horticulturist

Fee: \$23 (Members) / \$27 (Nonmembers)

Certificate: Elective: Basic or Advanced,  
Horticulture



04

05



## History and Principles of Landscape Design

As horticulturists and landscape designers, we need a strong foundation in the cultural history and theory of landscape to fully understand our work in the garden. In this course, we will explore Eastern and Western garden design, including long-practiced principles that encourage sustainable and ecological approaches in the landscape design field. This history survey will include visual presentations, readings, projects, and discussion.

Zoom / Online

Tuesday, January 23, 30, February 6, 13, 2024  
6 – 8:30 PM

Program Code: HOR8040

Instructor: Staci Jasin, landscape designer

Fee: \$150 (Members) / \$180 (Nonmembers)

Certificate: Advanced Core, Horticulture

## Emerging Trends in Plants, Landscapes, and Land Care

Some people are meadow-scaping, installing all-native plantings, and switching to low-mow lawns. Yet others look at such naturalized landscapes and see unkempt plants that are too tall. Towns and homeowner associations try to enforce blight ordinances against native plantings. At the same time, robots and drones are taking on the problems of weeds, insect invasions, and landscape maintenance. Battery-powered equipment is gaining space in garages and sheds. New, safer products are tackling old problems such as grub control. Join this event for a lively “flyover” of a changing landscape.

Zoom / Online

Tuesday, February 6, 2024, 5 – 6 PM

Program Code: HOR4308

Instructor: Kathy Connolly, landscape designer,  
Speaking of Landscapes, LLC

Fee: \$15 (Members) / \$18 (Nonmembers)

Certificate: Elective: Basic or Advanced,  
Horticulture



06



07

## The Meaning of Gardens

For garden makers and visitors alike, the beauty or symbolism of a garden may kindle a sense of connection to a larger world, physical or imaginary. Garden creation begins in the imagination as a quest for meaning. We will explore the process of imagining a garden that holds personal meaning and look at examples of types of gardens that fulfill meaning-making for their creators or for visitors.

Zoom / Online

Thursday, February 22, 2024 5 - 6 PM

Program Code: HORW502

Instructor: Jane Roy Brown, Writer/Editor,  
Native Plant Trust

Fee: \$15 (Members) / \$18 (Nonmembers)

Certificate: Elective: Basic or Advanced,  
Horticulture

## Rooted in Land: Participatory Community Design

Community spaces are exciting projects to envision and realize. In this class, you will learn a process for bringing stakeholders together to collaborate in creating outdoor spaces that are equitable, meaningful and useful for all. We will explore how to use your creative ideas to build partnerships, fundraise, overcome obstacles, and draw visitors to your public landscape, with an emphasis on the creation of spaces that are both ecologically and operationally sustainable.

Zoom / Online

Sunday, February 18 and 25, 2024, 6:30 – 8:30 PM

Program Code: HOR8026

Instructor: Staci Jasin, landscape designer

Fee: \$60 (Members) / \$72 (Nonmembers)

Certificate: Elective: Basic or Advanced,  
Horticulture



08



09

## Winter Pruning

Proper pruning of trees and shrubs improves their health and structure while enhancing their appearance in the landscape. Gain hands-on experience and learn basic pruning principles, including how to make proper cuts, when to prune different species, and how to select and maintain tools. This course includes a presentation and hands-on pruning outdoors. Please wear clothing appropriate for the weather.

Garden in the Woods, Framingham, MA

Sunday, February 25, 2024, 1 – 3 PM

OR

Sunday, March 17, 2024, 1 – 3 PM

Program Code: HOR1213

Instructor: David Falk, Senior Horticulturist, Native  
Plant Trust

Fee: \$30 (Members) / \$36 (Nonmembers)

Certificate: Elective: Basic or Advanced,  
Horticulture

10



## Courses

# Youth & Family

### Creating Native Plant Portraits: Botanical Beauty and Ecological Relationships with Printmaking

Choose a plant to observe and study. Observe and draw the identifying leaf shape, growth habit, and flowers or fruit structures. Research ecological relationships the plant has with other species. Choose some of those to draw, too. Create a design that shares what you've learned, cut a print block, and create prints of your design. Suitable for teens, families, and adults. Caregivers must remain with children at all times.

Garden in the Woods, Framingham, MA  
Saturday, September 16, 2023, 1 PM – 4 PM  
Program Code: ART2308

Instructor: Kari Percival, Illustrator

Fee: \$45 (Members) / \$54 (Nonmembers)

Certificate: Elective, Basic or Advanced,  
Horticulture



### Monarchs and Milkweed Time!

Come be a monarch butterfly! Start as an egg, eat your way through milkweed as a caterpillar, turn into an adult butterfly, and migrate to Mexico! Then make milkweed seed balls to take home to your own garden or wild space. Appropriate for children ages two and up. Caregivers must remain with children at all times.

Garden in the Woods, Framingham, MA  
Saturday, October 21, 2023, 2 – 3 PM  
Program Code: FAM7539

Instructor: Katie Banks Hone,  
The Monarch Gardener

Fee: \$15 (Members) / \$18 (Nonmembers)

Common milkweed (*Asclepias syriaca*), monarch butterfly caterpillar (*Danaus plexippus*), Dan Jaffe Wilder  
© Native Plant Trust





# Certificate Program

Whether you are interested in taking classes for fun, to add breadth and depth to your existing knowledge and skills, or to advance your career, our self-paced certificate programs in Native Plant Studies offer a unique opportunity to learn about the region's flora. Students enrolled in our certificate programs learn to identify, cultivate, and conserve native New England plants while gaining a greater appreciation for their ecological importance. Students also actively participate in ongoing public and private efforts to preserve and restore native New England flora.

Enrollment in the Certificate Program is not required to register for a certificate core course. However, please be aware that courses are designed for the level of certificate students.



The Basic Certificate track familiarizes students with the plants of New England, emphasizing structures, skills, and processes. We highly recommend beginning with the Foundations courses, which introduce students to native plant vocabulary, morphology, physiology, ecological context, evolution, and relationships. This knowledge is applied to subsequent courses.

**ALL BASIC CERTIFICATE CORE COURSES ARE NOW OFFERED EVERY SEMESTER, BOTH IN PERSON AND VIRTUALLY.**

## Foundations:

Plant Form and Function  
Plant Ecology  
Plant Families

## Plants and Their Habitats:

Wildflowers of New England  
Native New England Shrubs  
Framework Trees of New England

## Specialty:

Understanding and Managing Soils  
Two Electives (one Botany, one Horticulture)

## Application:

Two Studies (one Field, one Landscape)  
Community Service: 15 hours  
Final Portfolio (Your portfolio is a collection of your completed course materials.)

The Advanced Certificate tracks encourage students to apply their plant knowledge in a Botany & Conservation specialty or a Horticulture & Design specialty. To enter an Advanced track, students must complete the Basic Certificate or have enough experience to qualify for a Basic Certificate. We recommend beginning with the Foundations courses, which provide context for the field or landscape application. All Advanced core courses are offered every year.

## ADVANCED BOTANY & CONSERVATION

### Foundations:

Conservation Biology  
New England Plant Communities  
Plant Systematics

### Field Conservation:

Field Identification Techniques  
Botanical Inventory Methods and Techniques  
Wetland Identification and Delineation  
Seed Conservation

### Specialty:

Invasive Plants: Identification, Documentation, and Control  
Two Botany Electives

### Application:

Two Field Studies  
Community Service Leadership Project: 25 hours  
Final Portfolio (Your portfolio is a collection of your completed course materials.)

02



## ADVANCED HORTICULTURE & DESIGN

### Foundations:

Landscape for Life  
History and Principles of Landscape Design  
Horticultural Techniques

### Building Your Plant Palette:

Residential Landscape Design  
Native Herbaceous Plant Materials: Early Season  
Native Herbaceous Plant Materials: Late Season  
Native Woody Plant Materials

### Specialty:

Propagation  
Two Horticulture Electives

### Application:

Two Landscape Studies  
Community Service Leadership Project: 25 hours  
Final Portfolio (Your portfolio is a collection of your completed course materials.)

# Registration

Please visit [NativePlantTrust.org/education](https://www.NativePlantTrust.org/education) to register for our programs. American Express, Discover, Visa, and MasterCard accepted. For questions regarding registration, email [education@NativePlantTrust.org](mailto:education@NativePlantTrust.org).

**ADVANCE REGISTRATION** is required for all fee-based programs and is accepted on a first come, first-served basis upon full payment. Early registration is encouraged; programs with insufficient registration may be cancelled five business days before the scheduled start date. If your requested program is filled, please add yourself to the wait list; if space becomes available, you will be contacted according to your position on the wait list. No refunds or transfers can be given for withdrawals within a week of the program start date, or for class sessions you have not attended, except for COVID-19 related reasons. We believe education is interactive, with instructors and students building a community and culture of learning. For this reason, we do not provide virtual program recordings.

**EQUAL ACCESS** If you need assistance or special accommodations, email [education@NativePlantTrust.org](mailto:education@NativePlantTrust.org) or call 508-877-7630 x3303, at the time you register or as soon as possible thereafter.

For a full description of member benefits, please visit our website or call 508-877-7630 x3104

[NativePlantTrust.org/support](https://www.NativePlantTrust.org/support) 

## Membership

For immediate discounts on programs, join or renew when you register. Members help conserve and promote the region's native plants to ensure healthy, biologically diverse landscapes.

### MEMBERSHIP BENEFITS INCLUDE:

- \* Discounts on educational programs throughout New England
- \* Annual subscription to Native Plant Trust publications
- \* Monthly member e-newsletter
- \* Discounts at a wide range of regional and mail-order nurseries through our Nursery Connections Program and our Garden Shops
- \* Access to member-only on-demand webinars
- \* Invitations to special members' only events

### MEMBERSHIP LEVELS:

- \* Individual \$40
- \* Individual with Garden Access \$55
- \* Family/Friends \$75
- \* Contributor \$115
- \* Supporter \$250
- \* Sustainer \$500
- \* Conservation Circle \$1,000

## Donate

This year, you and fellow plant lovers across the country have gone outdoors and online to learn about plants. Today you have a wonderful opportunity to show your appreciation for the native plants that bring you peace and joy—and for the programs that help you identify, protect, and grow them.

With the record-breaking demand for our classes, we need your support to continue providing new content in accessible formats. Participant fees do not cover the costs of developing and delivering innovative programs. We need your help to keep more than 200 educational experiences available and affordable to everyone this year.

### DONATE ONLINE

[www.NativePlantTrust.org/fundprograms](https://www.NativePlantTrust.org/fundprograms)

### DONATE BY MAIL

Use the envelope provided in this catalog

### DONATE BY PHONE

508-877-7630 x3802



# BRING THE GREEN DREAM TO LIFE

More than ever before, people are turning to Native Plant Trust to learn about the natural world. Your generosity will help provide botany and horticulture programs that inspire thousands of people and benefit our planet.

[www.NativePlantTrust.org/fundprograms](http://www.NativePlantTrust.org/fundprograms)

**Native Plant Trust**

180 Hemenway Road  
Frammingham, Massachusetts 01701-2699

ADDRESS SERVICE REQUESTED